

# UBC PRECAST

PRECAST CONCRETE PRODUCTS

PRECAST CONCRETE / GENERAL CONSTRUCTION

## Prescott with Chase

**PRECAST  
CONCRETE  
VAULT or FLUSH  
TOILET  
BUILDINGS  
Prescott  
with Chase**



**PRESCOTT WITH CHASE. ABOVE: BARNWOOD WALLS, SIMULATED CEDAR SHAKE ROOF, CHASE AREA FOR STORAGE, OR PLUMBING AND ELECTRICAL IF FLUSH TYPE BUILDING. OPTIONAL TEXTURES AND COLORS ARE AVAILABLE.**

**PRESCOTT WITH CHASE MODEL, VAULT OR FLUSH STYLE PROVIDES YEARS OF LOW MAINTENANCE SERVICE. INSTALLATION TAKES JUST ONE DAY. CALL FOR MORE DETAILED DRAWINGS & SPECIFICATIONS.**

### The Prescott w/ Chase Features:

- Sweet Smelling Technology (SST) Design Criteria.
- ADA, Federal Accessibility, & Title 24 compliant.
- 60" Diameter interior turning radius.
- (2) 1123 Gallon vaults or approximately 1650 uses per vault.
- ABS one piece vault liner w/ side and floor embeds.

**ALL MATERIALS & COMPONENTS ARE  
PROUDLY  
MADE IN THE USA**



**REMEMBER 9-11**



### Durability Through Engineering

- Vault or Flush type, the Prescott w/ Chase is designed for the most extreme conditions for wind, snow, and seismic activities.
- Cleaning is made easy through hard durable finishes.
- Stainless Steel fixtures (right) are optional on Flush type units.



## CONCRETE

### MIX DESIGN:

UBC uses only the best components. Our standard mix design reaches over 5000 psi. (Higher strengths are optional). Concrete provides a long lasting, easy to clean surface. Two part epoxy paint on the reinforced 4 inch thick interior walls and 5 inch floor create a clean bright surface. Just wash it down with soap and water. The life of concrete far out performs other materials.

Concrete will not burn or rot and is highly vandal resistant.



**DUAL VAULTS PREVENT CROSS VENTING BETWEEN THE UNITS & PROVIDE FOR 1123 GALS. OF WASTE EACH.**

## FINISHES

### METAL WORK, STEEL DOORS and WINDOWS:

- Heavy gauge steel doors and windows.
- Primed and coated with two coats enamel.
- Door and Window frames are cast into the walls.
- Window glazing is 1/4 Lexan.

**EXTERIOR:** Shown below or custom finishes available.

**INTERIOR Walls & Floor of BUILDING:** Two-part gloss epoxy white on walls, gray color on floors.

**INTERIOR SURFACE OF TOILET VAULT:** Coal tar epoxy. ABS Liner with embeds or as specified.

### ADA COMPLIANT LOCKSET and HARDWARE:

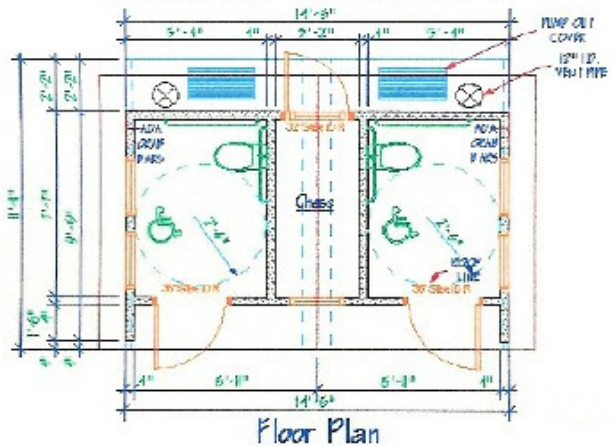
- Commercial Grade Lever lock ADA compliant.
- Deadbolt available as optional equipment.
- Spring Hinges or door Closer.
- Louvers are cast into walls. Amneostat or equal.
- Satin Finish on all hardware.
- 60 inch unobstructed turning diameter

### AVAILABLE IN THESE TEXTURES:



Barnwood Stucco Exposed Metal Rib Cedar Shake

### AVAILABLE IN FLUSH TYPE



Floor Plan

**SIGNS:** Signs are the standard recreational symbols as shown in photos. White on brown background, 12" x 12" with rounded corners. Signs are Lexan, 1/4 inch thick. Symbols on rear of sign.

**GRAB BARS:** Bars are stainless steel, 1-1/2".

**Polyethylene toilet riser.**

**Vent pipes** allow free air flow from both vaults and prevent cross venting. Smell goes through the vent pipe and not in the building.



Riser shown is provided on Vault Type units.



E-MAIL: [ubcprecast@msn.com](mailto:ubcprecast@msn.com)

[www.ubcprecast.com](http://www.ubcprecast.com)

Approved by:



**Customization  
is available**

# UBC

464 West Highway 26  
Blackfoot, ID 83221  
(208) 681-2665  
Fax: (208) 785-4807

**PRECAST CONCRETE PRODUCTS**

PRECAST CONCRETE / GENERAL CONSTRUCTION