

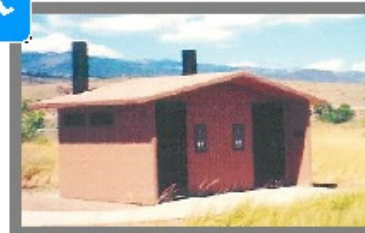
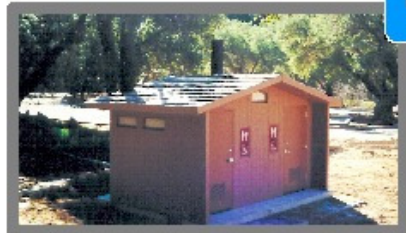
UBC PRECAST

PRECAST CONCRETE PRODUCTS

PRECAST CONCRETE / GENERAL CONSTRUCTION

Prescott

**PRECAST
CONCRETE
VAULT
TOILET
BUILDINGS
Prescott**



**PRESCOTT
MODEL,
VAULT TOILET
PROVIDES YEARS OF
LOW MAINTENANCE
SERVICE.
INSTALLATION
TAKES JUST ONE
DAY. CALL FOR
MORE DETAILED
DRAWINGS &
SPECIFICATIONS.**

ABOVE: BARNWOOD WALLS, SIMULATED CEDAR SHAKE ROOF. OPTIONAL TEXTURES ARE AVAILABLE. OVER 25 COLORS ARE AVAILABLE.

The Prescott Features:

- Sweet Smelling Technology (SST) Design Criteria
- ADA, Federal Accessibility, & Title 24 compliant.
- 60" Diameter interior turning radius
- (2) 1123 Gallon vaults or approximately 1650 uses
- ABS one piece vault liner w/ side and floor embeds

**INTERIOR VIEW OF
PRESCOTT. ADA TOILET
RISER & GRAB BARS.
EPOXY FINISH PROVIDES
EASY TO CLEAN SURFACES.
JUST WASH WITH SOAP
AND WATER.**



Durability Through Engineering

- The Prescott is designed for the most extreme conditions for wind, snow, and seismic activities.
- Cleaning is made easy through hard durable finishes.
- Stainless Steel urinal (right) is optional.



CONCRETE

MIX DESIGN

UBC uses only the best components. Our standard mix design reaches over 5000 psi. (Higher strengths are optional). Concrete provides a long lasting, easy to clean surface. Two part epoxy paint on the reinforced 4 inch thick interior walls and 5 inch floor create a clean bright surface. just wash it down with soap and water. The life of concrete far out performs other materials. Concrete will not burn or rot and is highly vandal resistant.



DUAL VAULTS PREVENT CROSS VENTING BETWEEN THE UNITS & PROVIDE FOR 1123 GALS. OF WASTE EACH.

FINISHES

METAL WORK, STEEL DOORS and WINDOWS:

- Heavy gauge steel doors and windows.
- Primed and coated with two coats enamel.
- Door and Window frames are cast into the walls.
- Window glazing is 1/4 Lexan.

EXTERIOR: Shown below or custom finishes available.

INTERIOR Walls & Floor of BUILDING: Two-part gloss epoxy white on walls, gray color on floors.

INTERIOR SURFACE OF TOILET VAULT: Coal tar epoxy. Liner, or as specified.

ADA COMPLIANT LOCKSET and HARDWARE

- Commercial Grade Lever lock ADA compliant.
- Deadbolt available as optional equipment.
- Spring Hinges or door Closer.
- Louvers are cast into walls. Amneostat or equal.
- Satin Finish on all hardware.
- 60 inch unobstructed turning diameter

AVAILABLE IN THESE TEXTURES:

Walls:



Barnwood



Stucco



Exposed

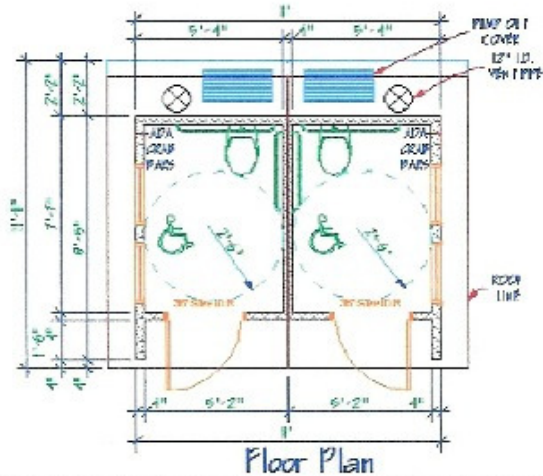


Metal Rib



Cedar Shake

Roofs:



SIGNS: Signs are the standard recreational symbols as shown in photos. 12" x 12" with rounded corners. Signs are Lexan, 1/4 inch thick. Symbols on rear of sign.

GRAB BARS: Bars are stainless steel, 1-1/2".

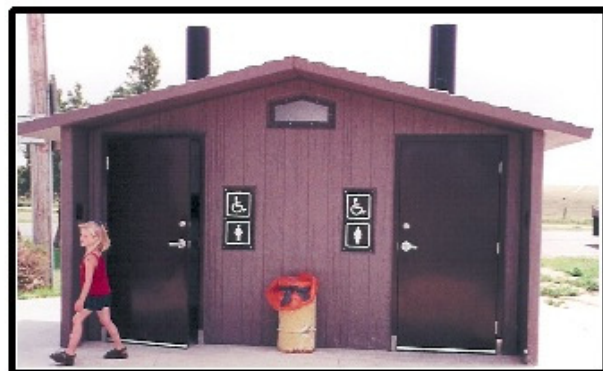
Polyethylene toilet riser.

Vent pipes allow free air flow from both vaults and prevent cross venting. Smell goes through the vent pipe and not in the building.



The Prescott and it's Components
are Proudly Made in the USA

Remember September 11th



E-mail: ubcprecast@msn.com

www.ubcprecast.com

Approved by:



**Customization
is available**

UBC

464 West Highway 26
Blackfoot, ID 83221
(208) 681-2666
Fax: (208) 785-4807

PRECAST CONCRETE PRODUCTS

PRECAST CONCRETE / GENERAL CONSTRUCTION