

UBC PRECAST

PRECAST CONCRETE PRODUCTS

PRECAST CONCRETE / GENERAL CONSTRUCTION

**PRECAST
CONCRETE
VAULT or FLUSH
TOILET
BUILDINGS
DOUBLE ASPEN**

DOUBLE ASPEN



ABOVE: BARNWOOD WALLS, SIMULATED CEDAR SHAKE ROOF, COLOR LAKESIDE. UPPER RIGHT: BARNWOOD WALLS, SIMULATED CEDAR SHAKE ROOF, OPTIONAL GREEN COLOR. LOWER RIGHT: SANDBLAST #3 WALLS, SIMULATED SHAKE ROOF, OPTIONAL CREAM

The Double Aspen Features:

- Sweet Smelling Technology (SST) Design Criteria
- ADA, Federal Accessibility, & Title 24 compliant.
- 60" Diameter interior turning radius
- (2) 1123 Gallon vaults or approx. 1650 uses
- ABS one piece vault liner w/ side and floor embeds



Exposed Aggregate Finish with SEALER



BARNWOOD EXTERIOR, CEDAR SHAKE ROOF, COLOR SEQUOIA SAND.
Multiple installations for high use areas.

Durability Through Engineering

- Vault or Flush type, the Aspen Double is designed for the most extreme conditions for wind, snow, and seismic activities.
- Protective screens with covered entry shield against wind and weather, and provides additional privacy.
- Cleaning is made easy through hard durable finishes.

CONCRETE

MIX DESIGN:

UBC uses only the best components. Our standard mix design reaches over 5000 psi. (Higher strengths are optional). Concrete provides a long lasting, easy to clean surface. Two part epoxy paint on the reinforced 4 inch thick interior walls and 5 inch floor create a clean bright surface. just wash it down with soap and water. The life of concrete far out performs other materials.

Concrete will not burn or rot and is highly vandal resistant.

INSTALLATION
by SAFE,
PROFESSIONAL
CREWS -
REMOTE SITES
NO PROBLEM.



FINISHES

METAL WORK, STEEL DOORS and WINDOWS:

- Heavy gauge steel doors and windows.
- Primed and coated with two coats enamel.
- Door and Window frames are cast into the walls.
- Window glazing is 1/4 Lexan.

EXTERIOR: Shown below or custom finishes available.

INTERIOR Walls & Floor of BUILDING: Two-part gloss epoxy white on walls, gray color on floors.

INTERIOR SURFACE OF TOILET VAULT: Coal tar epoxy. Liner, or as specified.

ADA COMPLIANT LOCKSET and HARDWARE:

- Commercial Grade Lever lock ADA compliant.
- Deadbolt available as optional equipment.
- Spring Hinges or door Closer.
- Louvers are cast into walls. Amneostat or equal.
- Satin Finish on all hardware.
- 60 inch unobstructed turning diameter

AVAILABLE IN THESE TEXTURES:

Walls:



Barnwood



Stucco



Exposed



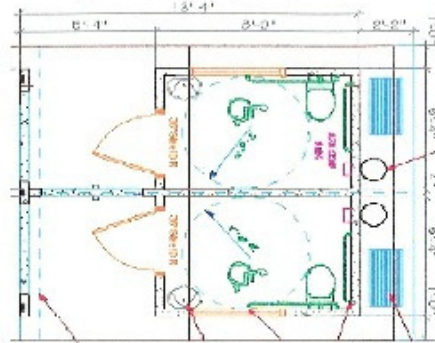
Metal Rib



Cedar Shake

Roofs:

AVAILABLE IN FLUSH TYPE
MORE COMPLETE drawings & specs available.



Floor Plan

SIGNS: White on brown background, non-reflective face, 12" x 12" with rounded corners. Signs are Lexan, 1/4 inch thick. Symbols on rear of sign.

GRAB BARS: Bars are stainless steel, 1-1/2".

Polyethylene toilet riser.

Vent pipes allow free air flow from both vaults and prevent cross venting. Smell goes through the vent pipe and not in the building.



E-mail: ubcprecast@msn.com

Website: www.ubcprecast.com

Approved by:



**Customization
is available**

UBC

464 West Hwy. 26
Blackfoot, ID 83221
(208) 681-2665
Fax: (208) 785-4807

PRECAST CONCRETE PRODUCTS

PRECAST CONCRETE / GENERAL CONSTRUCTION