

UBC PRECAST

PRECAST CONCRETE PRODUCTS

PRECAST CONCRETE / GENERAL CONSTRUCTION

Butte

**PRECAST
CONCRETE
FLUSH
TOILET
BUILDINGS**
Butte



BUTTE MODELS ABOVE: Split-face block exterior, simulated ribbed metal roof and bardwood exterior with simulated cedar shake roof. Optional textures and colors are available.

BUTTE MODEL PROVIDES YEARS OF LOW MAINTENANCE SERVICE. INSTALLATION TAKES JUST ONE DAY. CALL FOR MORE DETAILED DRAWINGS & SPECIFICATIONS.

The Butte Features:

- Men's side (1) ADA accessible stall, (2) toilets, (1) urinal, and (2) sinks.
- Women's side (1) ADA accessible stall, (3) toilets, and (2) sinks.
- ADA and Title 24 Compliant.
- Optional floor and/or wall tile.



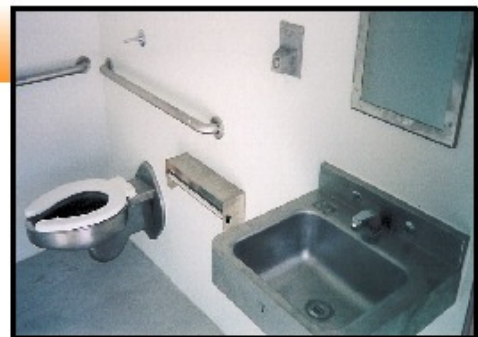
**ALL MATERIALS & COMPONENTS ARE
PROUDLY
MADE IN THE USA**

REMEMBER 9-11



Durability Through Engineering

- The Butte is designed for the most extreme conditions for wind, snow, and seismic activities.
- Cleaning is made easy through hard durable finishes.
- Stainless steel fixtures and vitreous china available.



CONCRETE

MIX DESIGN:

UBC uses only the best components. Our standard mix design reaches over 5000 psi. (Higher strengths are optional). Concrete provides a long lasting, easy to clean surface. Two part epoxy paint on the reinforced 4 inch thick interior walls and 5 inch floor create a clean bright surface. Just wash it down with soap and water. The life of concrete far out performs other materials. Concrete will not burn or rot and is highly vandal resistant.

INSTALLATION
by safe,
professional
CREWS -
REMOTE SITES
NO PROBLEM.



FINISHES

METAL WORK, STEEL DOORS and WINDOWS:

- Heavy gauge steel doors and windows.
- Primed and coated with two coats of enamel.
- Door and Window frames are cast into the walls.
- Window glazing is 1/4" Lexan.

EXTERIOR: Shown below or custom finishes available.

INTERIOR Walls & Floor of BUILDING: Two-part gloss epoxy white on walls, gray color on floors.

ADA COMPLIANT LOCKSET and HARDWARE:

- Commercial Grade Lever lock ADA compliant.
- Deadbolt available as optional equipment.
- Spring Hinges or door Closer.
- Louvers are cast into walls. Amneostat or equal.
- Satin Finish on all hardware.
- 60 inch unobstructed turning diameter

SIGNS: Signs are the standard recreational symbols as shown in photos. ADA compliant with Braille.

GRAB BARS: Bars are stainless steel, 1-1/2" outside diameter tubing, satin finish, 1-1/2" wall clearance as per ADA requirements.

AVAILABLE IN THESE TEXTURES:

Walls:



Bamwood



Stucco



Exposed



Metal Rib

Roofs:

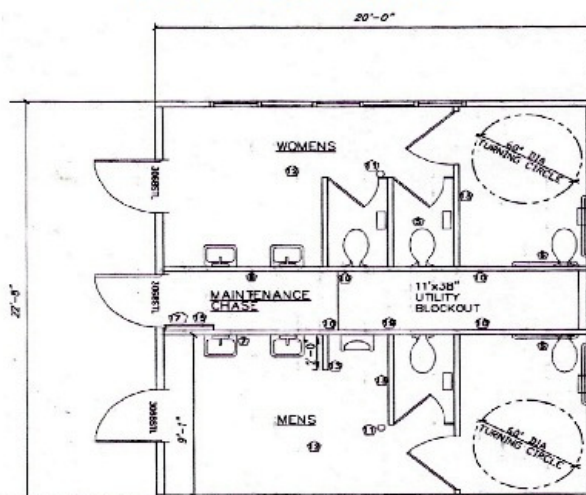


Cedar Shake



Manufactured In a controlled and safe environment.

FLOOR PLAN



E-mail: ubcprecast@msn.com

www.ubcprecast.com

Approved by:



Customization
is available

UBC

464 West Highway 26
Blackfoot, ID 83221
(208)681-2665
Fax: (208)785-4807

PRECAST CONCRETE PRODUCTS

PRECAST CONCRETE / GENERAL CONSTRUCTION